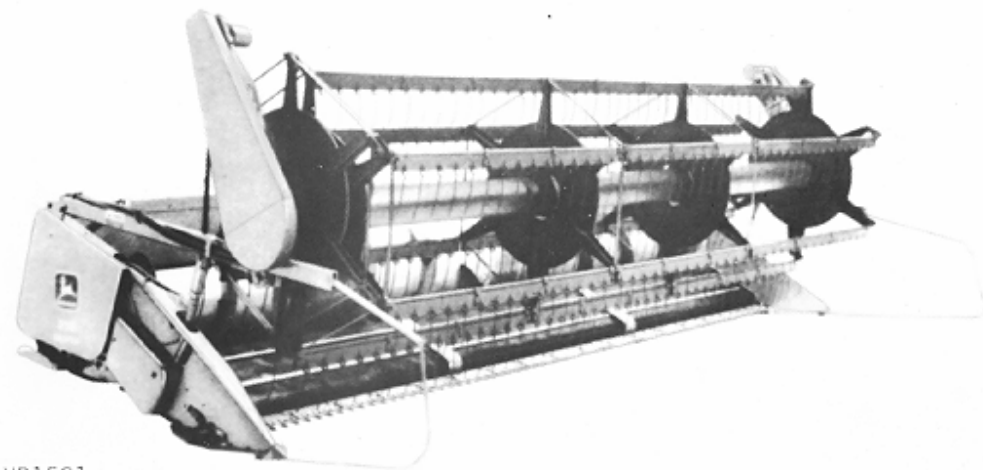


A2

PLATFORM, DRAPER - 218

HP1521 -UN-01JAN94



HP1521

JOHN DEERE 218 DRAPER PLATFORM

(SPECIFICATIONS AND DESIGN SUBJECT TO CHANGE WITHOUT NOTICE)

A3

PLATFORM, DRAPER - 218

SERIAL NUMBER PLATE

USE ALL NUMBERS, LETTERS, AND SPACES SHOWN ON THE SERIAL NUMBER PLATE IN WARRANTY CORRESPONDENCE.

218 DRAPER PLATFORM (-579900)

ON THESE 218 DRAPER PLATFORMS, SERIAL NUMBER PLATE IS LOCATED ON THE LEFT-HAND SIDE OF THE FRAME.

EXAMPLE: E0018579900

E - EQUIPMENT
0018 - PLATFORM MODEL
579900 - 218 DRAPER PLATFORM SERIAL NUMBER
H - FACTORY (HARVESTER WORKS)

218 DRAPER PLATFORMS (579901-)

ON THESE 218 DRAPER PLATFORMS, SERIAL NUMBER PLATE IS LOCATED ON THE LEFT-HAND SIDE OF THE FRAME.

EXAMPLE: H00218D579901
218 DRAPER PLATFORM

(FIRST LINE) H0 - FACTORY (HARVESTER WORKS)
218 - PLATFORM MODEL
D - CONFIGURATION/MODEL SUFFIX
579901 - SEQUENCE (SERIAL) NUMBER
(SECOND LINE) 218 DRAPER PLATFORM - PRODUCT TYPE

IMPORTANT

THIS PARTS CATALOG CONTAINS COMPLETE PARTS INFORMATION ON THE 218 DRAPER PLATFORM. VINTAGE IS DETERMINED BY SERIAL NUMBERS UNDER WHICH CUTTING PLATFORMS WERE MANUFACTURED. IT IS IMPORTANT THAT THE CORRECT SERIAL NUMBER BE USED WHEN ORDERING PARTS.

SERIAL NUMBER LISTING INFORMATION

SERIAL NUMBER INFORMATION IS LISTED TO SHOW ON WHICH MACHINES EACH PART CAN BE USED; FOR EXAMPLE:

- THE PART CAN BE USED ON ALL MACHINES.
- 000000- THE PART CAN BE USED ON ALL MACHINES BEGINNING WITH THE SERIAL NUMBER LISTED.
- 000000 THE PART CAN BE USED ON ALL MACHINES UP TO AND INCLUDING THE SERIAL NUMBER LISTED.
- 000000-000000 THE PART CAN BE USED ON ALL MACHINES BETWEEN AND INCLUDING THE SERIAL NUMBERS LISTED.

WHEN XXXXXX'S ARE LISTED IN PLACE OF A SERIAL NUMBER, A SERIAL NUMBER CHANGE WAS MADE BUT THE EXACT SERIAL NUMBER WAS NOT AVAILABLE WHEN THE CATALOG WAS PRODUCED.

JDM REMANUFACTURED COMPONENTS

THE SERVICE PARTS LISTED IN THIS CATALOG ARE INTENDED FOR THE REPAIR OF ORIGINAL EQUIPMENT COMPONENTS. ALTHOUGH MOST SERVICE PARTS MAY BE USED TO REPAIR REMANUFACTURED COMPONENTS, THE REMANUFACTURED DESIGN MAY CHANGE PARTS SUFFICIENTLY SO THAT SERVICE PARTS ARE INADEQUATE OR NOT USABLE.

BOLT AND CAP SCREW STRENGTH IDENTIFICATION

BOLTS AND CAP SCREWS REQUIRED TO HAVE HIGH-STRENGTH QUALITIES EQUIVALENT TO SAE GRADE 8 ARE IDENTIFIED THROUGHOUT THIS CATALOG BY THE DESCRIPTION HS SAE 8. ALL STANDARD BOLTS AND CAP SCREWS ARE SAE GRADE 5 OR LOWER.

COMPLETE GOODS LISTINGS

COMPLETE GOODS ARE LISTED IN BOLD FACE TYPE. ORDER SEPARATELY. DO NOT INCLUDE ON REPLACEMENT PARTS ORDER.

SI UNITS OF MEASURE

METRIC DIMENSIONS ARE GIVEN, WHERE APPLICABLE, THROUGHOUT THIS PARTS CATALOG.

CHANGE INDICATOR LINE (MICROFICHE CATALOGS ONLY)

CHANGES AFFECTING THE ORDERING OF PARTS ARE IDENTIFIED BY VERTICAL LINES MARKED IN THE LEFT-HAND MARGIN OF REVISED PARTS LISTING IMAGES. A LINE IS ALSO AT THE LEFT-HAND EDGE OF THE SAME PART NUMBER IN THE NUMERICAL INDEX TO SHOW THE LOCATION OF REVISED INFORMATION.

A5

SECTIONAL INDEX

	SECTION
GENERAL INFORMATION	05
REEL	10
FRAME, STRIPPERS, DIVIDERS, AND PLATES	15
KNIFE, CUTTERBAR, AND DRIVES	20
AUGER AND DRIVE	25
HYDRAULICS	30
SHIELDS	35
BELTS, CHAINS, SHEAVES, SPROCKETS, AND DECALS	40
NUMERICAL INDEX	45

**Thanks very much for your reading,
Want to get more information,
Please click here, Then get the complete
manual**

JustClickHere 

NOTE:

**If there is no response to click on the link above,
please download the PDF document first, and then
click on it.**

**Have any questions please write to me:
admin@servicemanualperfect.com**

A6

PLATFORM, DRAPER - 218

ALPHABETICAL INDEX

GRID		PAGE	GRID		PAGE
A			H		
A11	ARM, REEL.....	10-4	C3	HOSE AND COUPLER CONVERSION.....	30-14
A12	ARM, REEL.....	10-5	B22	HOSES, HYDRAULIC DRIVE REEL, PICKUP	30-8
B13	AUGER, CROSS	25-4	B9	HOUSING, DRAPER DRIVE ROLLS.....	20-14
B			B1	HOUSING, DRAPER IDLER ROLLS.....	20-6
C9	BELT, DRIVE, ON L.H. SIDE	40-3	B22	HYDRAULIC DRIVE REEL HOSES, PICKUP REEL	30-8
B5	BOLTED GUARDS AND KNIVES	20-10	C1	HYDRAULIC LIFT REEL MASTER CYLINDER	30-12
C			B18	HYDRAULIC LIFT REEL OIL LINES.....	30-4
A23	CASE, KNIFE DRIVE	20-2	B20	HYDRAULIC LIFT REEL OIL LINES.....	30-6
A12	CHAIN, CYL. ROD EXTENSION	10-5	B23	HYDRAULIC LIFT REEL SLAVE CYLINDER	30-9
C8	CHAINS, DRIVE, ON RIGHT-HAND SIDE	40-1	B24	HYDRAULIC MOTOR, HYDROSTATIC DRIVE REEL	30-10
C3	CONVERSION HOSES AND COUPLERS	30-14	B16	HYDRAULIC REEL LINES.....	30-1
B13	CROSS AUGER	25-4	B17	HYDRAULIC REEL LINES.....	30-3
B12	CROSS AUGER DRIVE.....	25-3	B24	HYDROSTATIC DRIVE REEL HYDRAULIC MOTOR.....	30-10
B13	CROSS AUGER SHAFT	25-4	I		
B13	CROSS AUGER SPROCKETS	25-4	A22	IDLER, KNIFE DRIVE	20-1
A25	CUTTERBAR DRIVE	20-4	K		
A12	CYLINDER ROD EXTENSION.....	10-5	A23	KNIFE DRIVE CASE	20-2
C1	CYLINDER, MASTER, HYDRAULIC LIFT REEL	30-12	A22	KNIFE DRIVE IDLER AND TIGHTENER	20-1
B23	CYLINDER, SLAVE, HYDRAULIC LIFT REEL	30-9	B5	KNIFE HEAD, BOLTED	20-10
D			B3	KNIFE HEAD, RIVETED	20-8
C11	DECALS, R.H. AND L.H.	40-5	B5	KNIVES AND GUARDS, BOLTED.....	20-10
A19	DIVIDER POINTS.....	15-4	B3	KNIVES AND GUARDS, RIVETED	20-8
A16	DRAPER BELT.....	15-1	L		
C2	DRAPER DIVIDER POINT.....	30-13	C11	L.H. DECALS	40-5
B9	DRAPER DRIVE ROLL HOUSINGS	20-14	B18	LIFT REEL OIL LINES, HYDRAULIC	30-4
B9	DRAPER DRIVE ROLLS	20-14	B20	LIFT REEL, OIL LINES, HYDRAULIC.....	30-6
C2	DRAPER DRIVE TIGHTENER.....	30-13	B18	LINES, HYDRAULIC LIFT REEL	30-4
B1	DRAPER IDLER ROLLS	20-6	B16	LINES, HYDRAULIC REEL	30-1
B1	DRAPER IDLER ROLLS AND SUPPORTS	20-6	B17	LINES, REEL, HYDRAULIC.....	30-3
B8	DRAPER SHIELDS AND SUPPORTS	20-13	A19	LOOP DIVIDER	15-4
A16	DRAPER SLAT.....	15-1	M		
A16	DRAPERS.....	15-1	C1	MASTER CYLINDER, HYDRAULIC LIFT REEL.....	30-12
A23	DRIVE CASE, KNIFE	20-2	B24	MOTOR, HYDRAULIC, HYDROSTATIC DRIVE REEL.....	30-10
B12	DRIVE, CROSS AUGER	25-3	B25	MOTOR, REEL	30-11
A25	DRIVE, CUTTERBAR	20-4	A23	MOUNTING, KNIFE DRIVE CASE	20-2
E			O		
A12	EXTENSION CYL. ROD.....	10-5	B18	OIL LINES, HYDRAULIC LIFT REEL	30-4
F			B20	OIL LINES, HYDRAULIC LIFT REEL	30-6
A20	FEED PLATES	15-5	P		
A17	FLOOR STRIPPER.....	15-2	A9	PICKUP REEL	10-1
A18	FRAME	15-3	A13	PICKUP REEL DRIVE SHAFTS AND MOUNTINGS	10-6
G			A13	PICKUP REEL DRIVE SHAFTS AND SPROCKETS	10-6
B5	GUARDS AND KNIVES, BOLTED.....	20-10	A10	PICKUP REEL ECCENTRIC SPIDER.....	10-3
B3	GUARDS AND KNIVES, RIVETED	20-8	B22	PICKUP REEL, HYDRAULIC DRIVE REEL HOSES	30-8
			A12	PIN, REEL ARM	10-5
			A20	PLATES, FEED.....	15-5
			A19	POINTS, DIVIDER	15-4

A7

ALPHABETICAL INDEX - CONTINUED

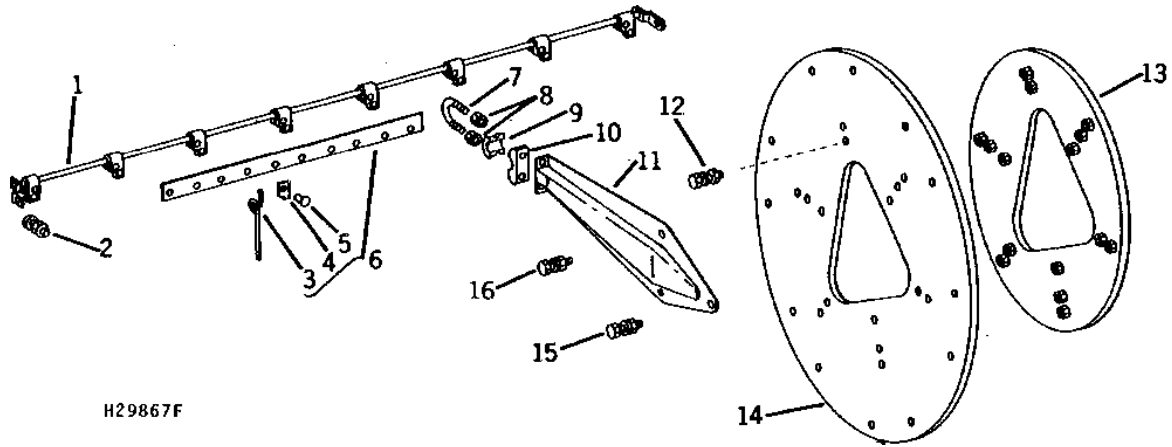
GRID		PAGE	GRID	PAGE
R				
C11	R.H. DECALS	40-5		
A11	REEL ARM	10-4		
A12	REEL ARM	10-5		
B17	REEL LINES, HYDRAULIC	30-3		
C1	REEL MASTER CYLINDER, HYDRAULIC LIFT	30-12		
B25	REEL MOTOR	30-11		
A9	REEL, PICKUP	10-1		
A10	REEL, PICKUP, ECCENTRIC SPIDER	10-3		
B3	RIVETED GUARDS AND KNIVES	20-8		
B9	ROLLS, DRAPER DRIVE	20-14		
B1	ROLLS, DRAPER IDLER	20-6		
S				
B13	SHAFT, CROSS AUGER	25-4		
B9	SHAFTS, DRAPER DRIVE ROLLS	20-14		
A13	SHAFTS, DRIVE, PICKUP REEL	10-6		
A23	SHEAVE, KNIFE DRIVE CASE	20-2		
C9	SHEAVES ON L.H. SIDE	40-3		
A22	SHEAVES, KNIFE DRIVE IDLER	20-1		
A22	SHEAVES, KNIFE DRIVE TIGHTENER	20-1		
C6	SHIELD	35-1		
C6	SHIELD SKID SHOE	35-1		
A13	SHIELD, PICKUP REEL DRIVE	10-6		
B8	SHIELDS, DRAPER	20-13		
C6	SHOE, SKID, SHIELD	35-1		
A10	SPIDER, PICKUP REEL ECCENTRIC	10-3		
C8	SPROCKETS ON R.H. SIDE	40-1		
B13	SPROCKETS, CROSS AUGER	25-4		
B12	SPROCKETS, CROSS AUGER DRIVE	25-3		
C2	SPROCKETS, DRAPER DRIVE TIGHTENER	30-13		
A12	STOP, CYL. ROD EXTENSION	10-5		
A17	STRIPPER	15-2		
A17	STRIPPER, FLOOR	15-2		
B1	SUPPORTS AND DRAPER IDLER ROLLS	20-6		
B8	SUPPORTS AND DRAPER SHIELDS	20-13		
T				
C2	TIGHTENER, DRAPER DRIVE	30-13		
A22	TIGHTENER, KNIFE DRIVE	20-1		
C9	TIGHTENERS ON L.H. SIDE	40-3		
C8	TIGHTENERS ON R.H. SIDE	40-1		

A9

REEL

H29867F -UN-01JAN94

PICKUP REEL



KEY	PART NO.	PART NAME	QTY	SERIAL NO.	REMARKS
1	AH97185	SHAFT	6		
2	03H1810	BOLT	144		1/4" X 1-1/2"
	14H786	NUT	144		1/4"
3	H33316	FINGER	258		
4	H33317	CLIP	258		
5	H33318	RIVET	258		
6	AH97194	SLAT	6		CENTER
	AH97195	SLAT	12		R.H. AND L.H.
7	E40203	U-BOLT	24		
8	E40202	LOCK NUT	48	-585895	(SUB E45229)
	E45229	LOCK NUT	48		
9	E40205	CAP	24		
10	E40206	BASE	24		
11	AH97207	ARM	24		
12	19H1905	CAP SCREW	24		5/16" X 1"
	12H303	LOCK WASHER	24		5/16"
	14H785	NUT	24		5/16"
13	AH97208	PLATE	4		STIFFENING
14	H98690	PLATE	4		SPIDER
15	19H1849	CAP SCREW	24		5/16" X 1-1/4"
	12H303	LOCK WASHER	24		5/16"
	14H785	NUT	24		5/16"
16	19H2020	CAP SCREW	48		5/16" X 1/2"
	12H303	LOCK WASHER	48		5/16"
	14H785	NUT	48		5/16"

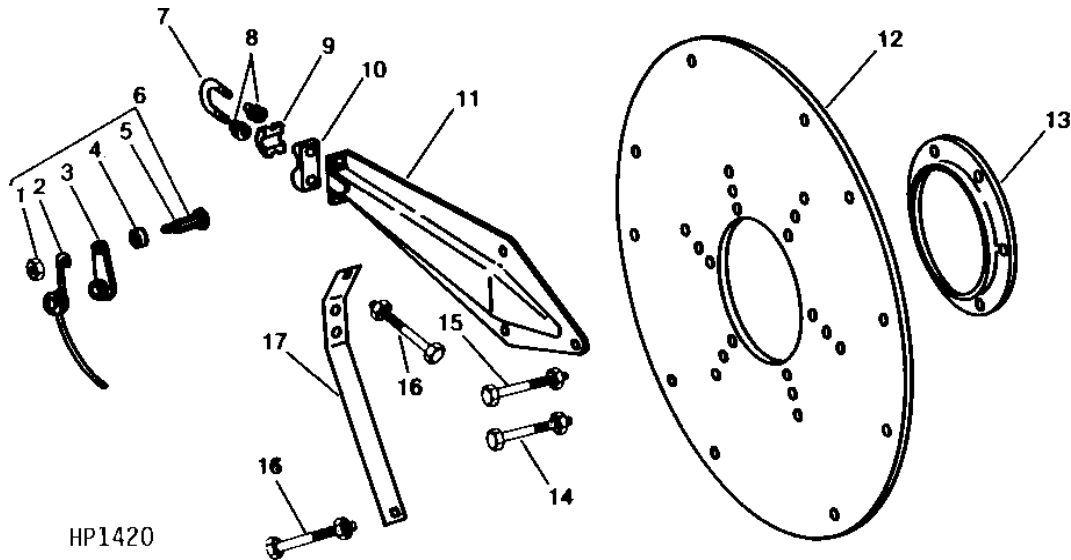
MEMORANDA

A10

REEL

HP1420 -UN-01JAN94

PICKUP REEL ECCENTRIC SPIDER



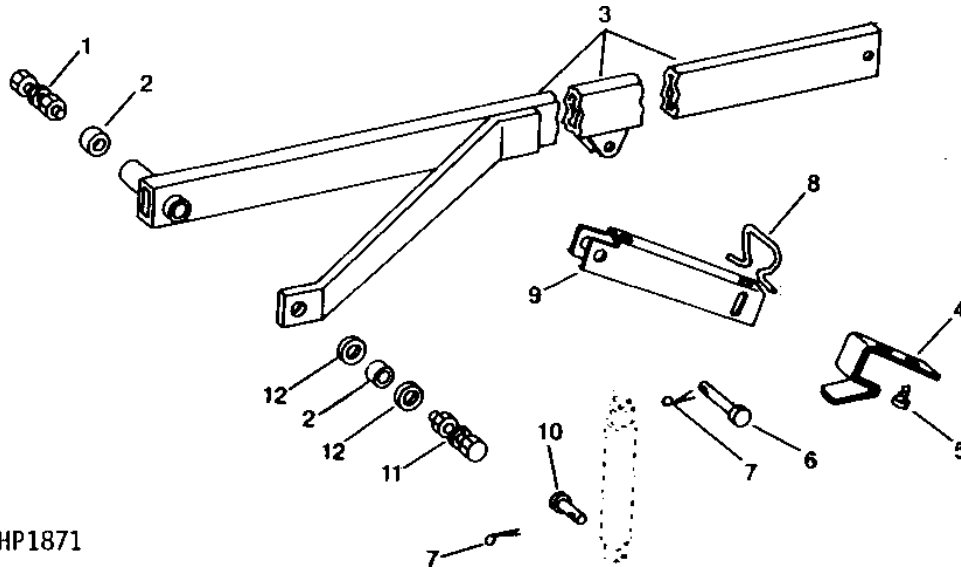
KEY	PART NO.	PART NAME	QTY	SERIAL NO.	REMARKS
1	E59584	FLANGE NUT	12		(RIGID)
2	H33332	FINGER	6		R.H. AUXILIARY (RIGID)
	H33333	FINGER	6		L.H. AUXILIARY (RIGID)
3	AH97221	STRAP	12		(RIGID)
4	E40212	SPACER	12		(RIGID)
5	E59585	BOLT	12		(RIGID)
6	AH97217	FINGER	6		R.H. (RIGID)
	AH97218	FINGER	6		L.H. (RIGID)
7	E40203	U-BOLT	12		
8	E40202	LOCK NUT	24	-585895	(SUB E45229)
	E45229	LOCK NUT	24		
9	E40205	CAP	12		
10	E40206	BASE	12		
11	AH97207	ARM	12		
12	H98692	PLATE	2		
13	H98693	RING	2		
14	19H1900	CAP SCREW	12	5/16" X 3/4"	
	12H303	LOCK WASHER	12	5/16"	
	14H785	NUT	12	5/16"	
15	19H2020	CAP SCREW	12	5/16" X 1/2"	
	12H303	LOCK WASHER	12	5/16"	
	14H785	NUT	12	5/16"	
16	03H1893	BOLT	36	1/4" X 1/2"	
	E40202	LOCK NUT	36	-585895	(SUB E45229)
	E45229	LOCK NUT	36		
17	H98764	BRACE	36		

A11

REEL

REEL ARM
(SERIAL NO. -582725)

HP1871 -UN-01JAN94



HP1871

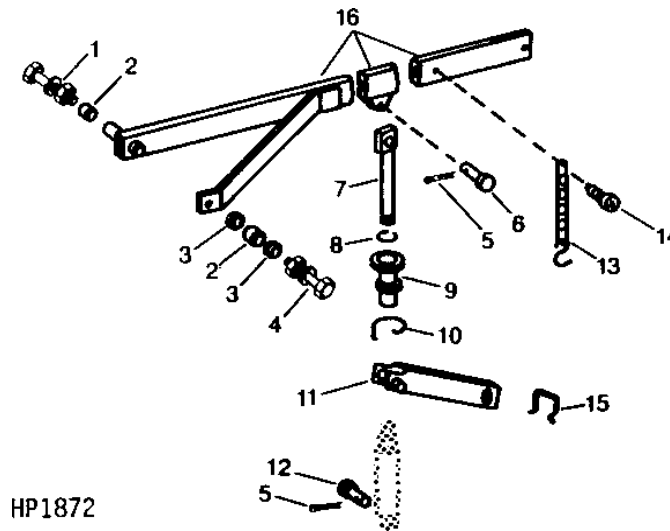
KEY	PART NO.	PART NAME	QTY	SERIAL NO.	REMARKS
1	19H1909	CAP SCREW	1		3/4" X 3-3/4", (R.H.)
	19H2000	CAP SCREW	1		3/4" X 5", (L.H.)
	12H236	LOCK WASHER	2		3/4"
2	14H794	NUT	2		3/4"
	M63139	BUSHING	4		
3	AH92212	ARM	1	-582725	(L.H.) (SUB AH112089)
	AH112089	LIFT ARM	1		(L.H.)
	AH92211	ARM	1	-582725	(R.H.) (SUB AH112088)
	AH112088	LIFT ARM	1		(R.H.)
4	H98698	LATCH	2		STOP
5	H87048	SCREW	4		SELF-TAPPING
6	H98494	PIN	2		DRILLED
7	11H236	COTTER PIN	4		1/8" X 1"
8	H87239	RETAINER	2		STOP
9	H94005	STOP	2		
10	H98494	PIN	1		(L.H.) DRILLED
	M48519	PIN	1		(R.H.) DRILLED
11	19H1734	CAP SCREW	2		5/8" X 2"
	12H294	LOCK WASHER	2		5/8"
	14H1039	NUT	2		5/8"
12	24H1368	WASHER	4		21/32" X 1-5/16" X 0.090"

A12

REEL

REEL ARM
(SERIAL NO. 582726-)

HP1872 -UN-01JAN94



HP1872

KEY	PART NO.	PART NAME	QTY	SERIAL NO.	REMARKS
1	19H1909	CAP SCREW	1		3/4" X 3-3/4", R.H.
	19H2000	CAP SCREW	1		3/4" X 5", L.H.
	12H236	LOCK WASHER	2		3/4"
	14H794	NUT	2		3/4"
	2	M63139	BUSHING	4	
3	24H1368	WASHER	4		21/32" X 1-5/16" X 0.090"
4	19H1734	CAP SCREW	2		5/8" X 2"
	12H294	LOCK WASHER	2		5/8"
	14H1039	NUT	2		5/8"
5	11H236	COTTER PIN	4		1/8" X 1"
6	H98765	PIN	2		(TOP)
7	H105501	EXTENSION	2		
8	H25099	SNAP RING	2		
9	H105498	NUT	2		
10	H105499	RING	2	-600000	(SUB H118628)
	H118628	RING	2		
11	AH104396	STOP	2		
12	H98494	PIN	1		L.H. (DRILLED)
	M48519	PIN	1		R.H. (DRILLED)
13	AH104090	LINK CHAIN	2		
14	H76139	SCREW	2		
15	H87239	RETAINER	2		
16	AH112089	LIFT ARM	1		L.H.
	AH112088	LIFT ARM	1		R.H.

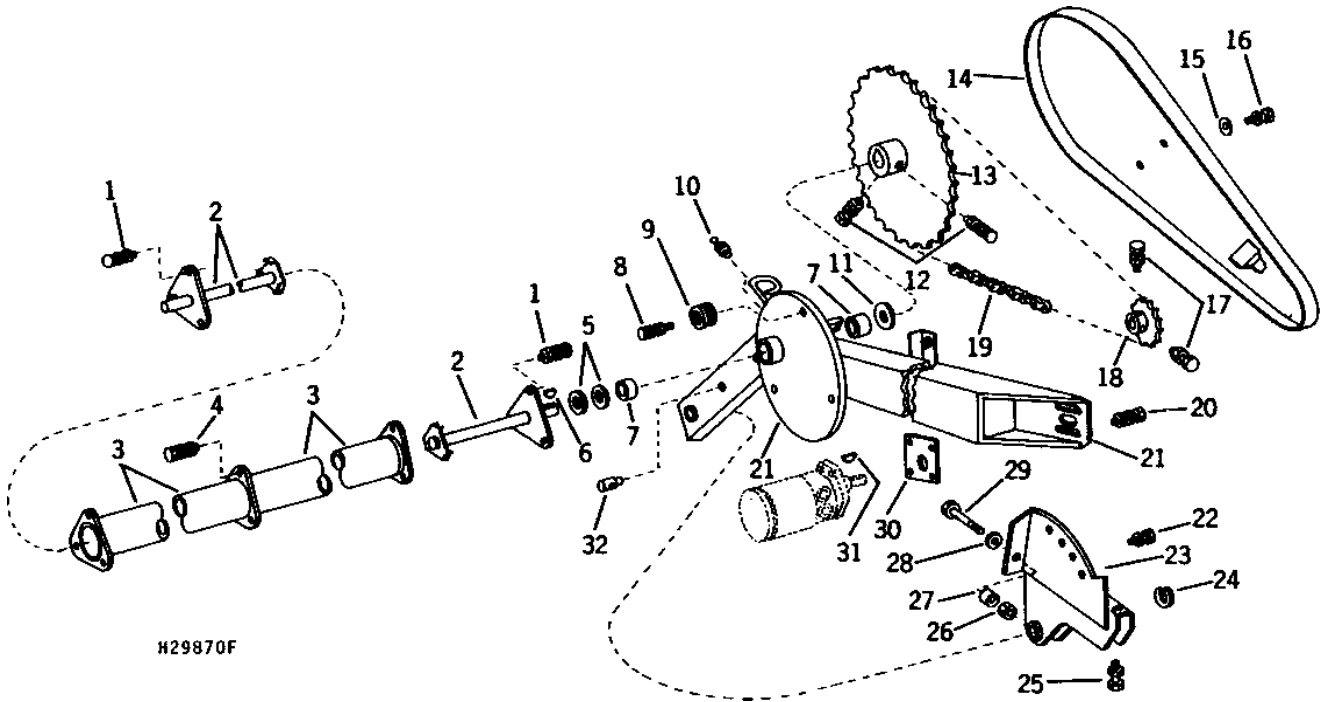
A13

REEL

H29870F

-UN-01JAN94

PICKUP REEL DRIVE SHAFTS, MOUNTINGS, AND SPROCKETS



H29870F

A14

REEL

PICKUP REEL DRIVE SHAFTS, MOUNTINGS, AND SPROCKETS - CONTINUED

KEY	PART NO.	PART NAME	QTY	SERIAL NO.	REMARKS
1	03H1495	BOLT	6		3/8" X 1-1/2"
	12H304	LOCK WASHER	6		3/8"
	H20024	LOCK NUT	6		
2	AH97211	SHAFT	2		
3	AH97165	SHAFT	1		CENTER
4	19H1732	CAP SCREW	6		3/8" X 1-1/4"
	12H304	LOCK WASHER	6		3/8"
	H20024	LOCK NUT	6		
5	24H1553	WASHER	4		1-5/8" X 2-1/4" X 0.194"
6	26H46	SHAFT KEY	2		3/8" X 2-1/8"
7	H98743	BUSHING	4		
8	19H1765	CAP SCREW	6		3/8" X 1-3/4"
	12H304	LOCK WASHER	6		3/8"
	14H812	NUT	6		3/8"
9	AE24403	BALL BEARING	6		
10	JD7759	LUBRICATION FITTING	2		
11	24H1520	WASHER	2		1-15/32" X 2" X 0.105"
12	22H853	SET SCREW	4		3/8" X 7/8"
	14H732	NUT	4		3/8"
13	AH88831	CHAIN SPROCKET	2		81 TEETH, DRIVEN
14	AH97012	SHIELD	2		
15	24H1136	WASHER	4		11/32" X 11/16" X 0.065"
16	19H1900	CAP SCREW	4		5/16" X 3/4"
	12H303	LOCK WASHER	4		5/16"
17	22H818	SET SCREW	4		5/16" X 3/4"
	14H611	NUT	4		5/16"
18	AH96655	CHAIN SPROCKET	2		13 TEETH
19	AH96647	LINK CHAIN	2		ROLLER, DRIVE, TYPE 50, 5/8" PITCH, 164 LINKS
20	03H1764	BOLT	8		1/2" X 1-3/4"
	12H301	LOCK WASHER	8		1/2"
	14H1040	NUT	8		1/2"
21	AH94876	BRACKET	1	-611000	(SUB AH116646)
	AH116646	SUPPORT	1		(R.H.)
	AH96948	BRACKET	1	-611000	(SUB AH116647)
	AH116647	SUPPORT	1		(L.H.)
22	19H1792	CAP SCREW	2		1/2" X 1"
	12H301	LOCK WASHER	2		1/2"
23	AH92327	BRACKET	1		(R.H.)
	AH92328	BRACKET	1		(L.H.)
24	C3142E	SNAP RING	2		
25	H93483	SET SCREW	2		
	14H821	NUT	2		5/8"
26	E54809	LOCK NUT	2		
27	H81277	BUSHING	2		
28	24H1111	WASHER	2		17/32" X 1-1/16" X 0.090"
29	08H4654	CAP SCREW	2		1/2" X 7-1/2"
30	H87360	SHIM	2		
31	26H22	SHAFT KEY	2		1/4" X 1"
32	H89110	TRUNNION	2		

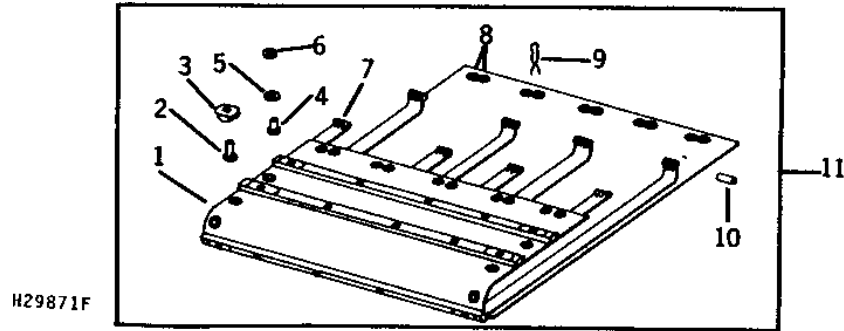
MEMORANDA

A16

FRAME, STRIPPERS, DIVIDERS, AND PLATES

DRAPERS

H29871F -UN-01JAN94



H29871F

KEY	PART NO.	PART NAME	QTY	SERIAL NO.	REMARKS
1	H92518	SLAT	5		
2	P41339	RIVET	20		
3	H31621	CLIP	10		SLAT END
4	P41338	RIVET	16		
5	P13759	WASHER	16		LEATHER
6	H31622	WASHER	16		BURR, RIVET
7	AH92156	BELT	2		DRIVE, INNER
	AH92157	BELT	2		DRIVE, OUTER
8	AP20769	GROMMET	20		
9	H31624	CLAMP	5		
10	H78717	PIN	2		
11	AH92155	CONVEYOR	1		

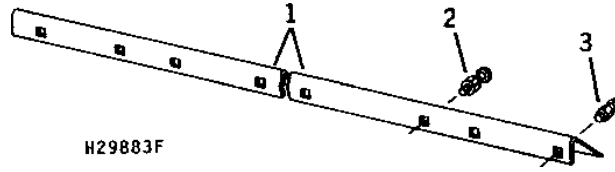
NOTE: QUANTITIES SHOWN ARE FOR ONE UNIT. THREE UNITS USED PER MACHINE.

A17

FRAME, STRIPPERS, DIVIDERS, AND PLATES

H29883F -UN-01JAN94

REAR STRIPPER

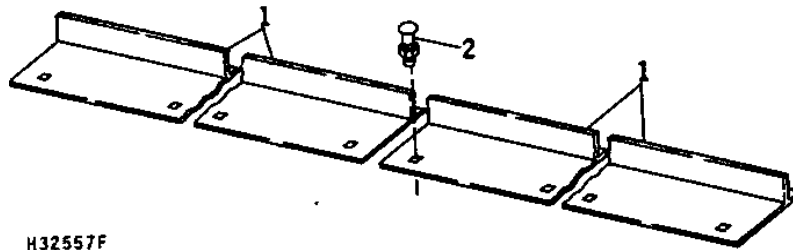


H29883F

KEY	PART NO.	PART NAME	QTY	SERIAL NO.	REMARKS
1	H97193	STRIPPER	1	(R.H.)	
	H97194	STRIPPER	1	(L.H.)	
2	03H1500	BOLT	4	3/8" X 1"	
	N10215	LOCK NUT	4		
3	03H1765	BOLT	14	3/8" X 3/4"	
	N10215	LOCK NUT	14		

H32557F -UN-01JAN94

FLOOR STRIPPER



H32557F

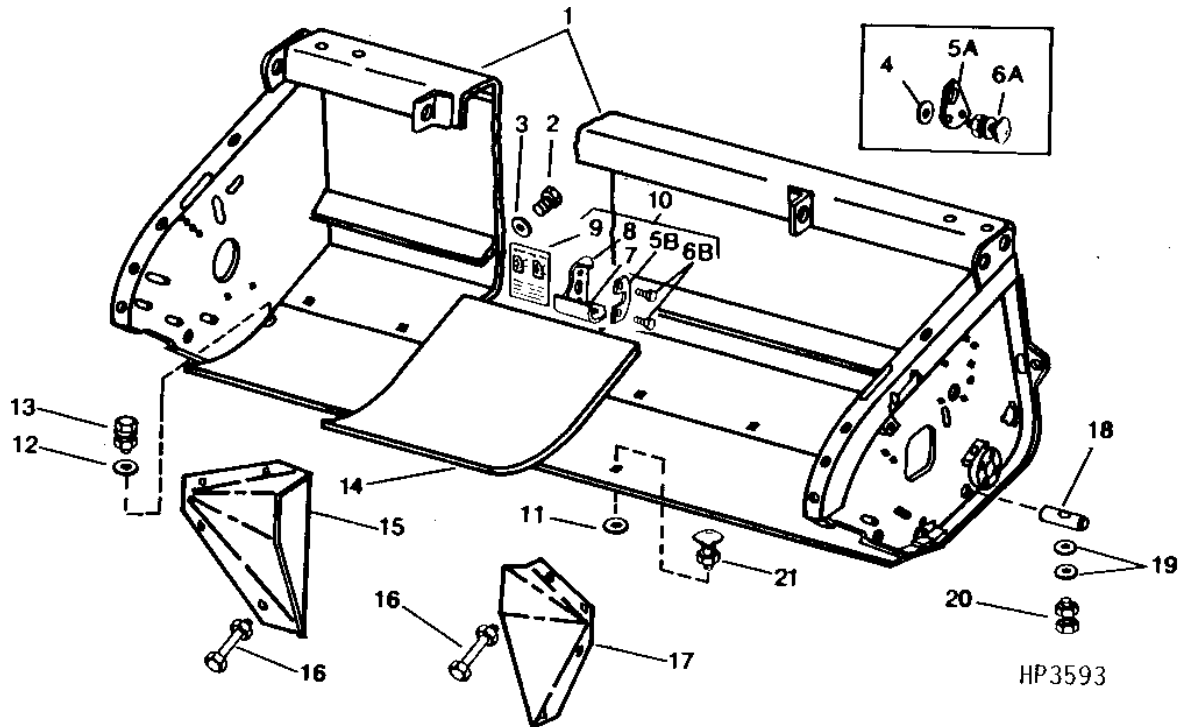
KEY	PART NO.	PART NAME	QTY	SERIAL NO.	REMARKS
1	AH103318	STRIPPER	2	-483410	(SUB H109698)
	H109698	STRIPPER	2		
2	03H1540	BOLT	4	5/16" X 3/4"	
	N10213	LOCK NUT	4		

A18

FRAME, STRIPPERS, DIVIDERS, AND PLATES

HP3593 -UN-01JAN94

FRAME



HP3593

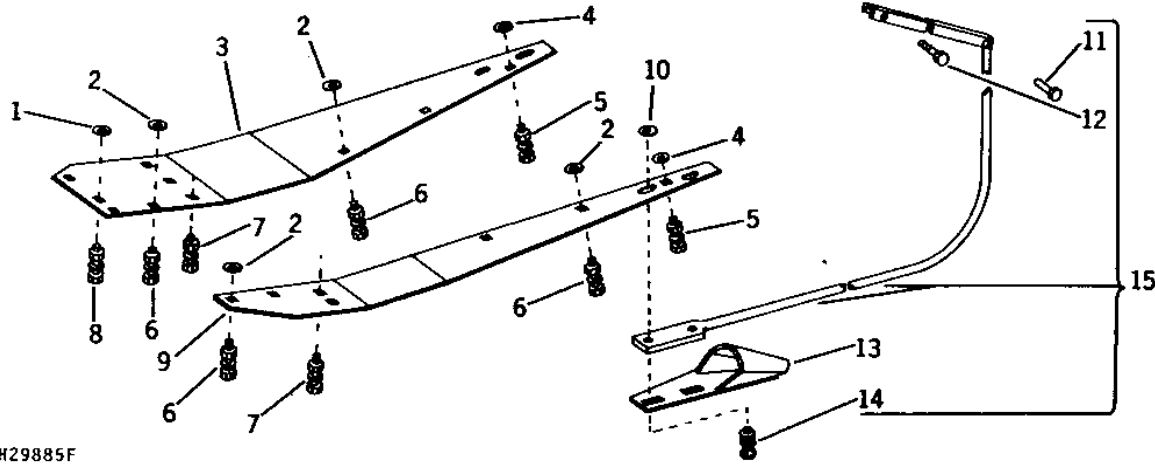
KEY	PART NO.	PART NAME	QTY	SERIAL NO.	REMARKS
1	AH103317	FRAME	1	-600000	(SUB AH111264)
	AH111264	FRAME	1		
2	19H1756	CAP SCREW	2		5/8" X 1-1/2"
	12H294	LOCK WASHER	2		5/8"
3	H20895	WASHER	2	-622200	(SUB N72306)
	N72306	WASHER	2		16.662 X 50.800 X 6.350 MM (21/32" X 2" X 1/4")
4	24H1825	WASHER	4	-621250	11/16" X 1-1/2" X 0.0194"
5A	H91615	PLATE	2	-621250	
5B	H137143	PLATE	1		
6A	09H1587	BOLT	4	-621250	5/8" X 2"
	12H304	LOCK WASHER	4	-621250	3/8"
	14H1039	NUT	4	-621250	5/8"
6B	19M7784	SCREW	2		M10 X 20
7	REINFORCEMENT	1		L.H. LATCH PIN PLATE (USE WITH QUIK-TACK OR NEW SERVICE FRAME)
	REINFORCEMENT	1		
8	PLATE	1		R.H.(USE WITH QUIK-TACK OR NEW SERVICE FRAME)
	PLATE	1		(INSTALLED ON L.H. SIDE OF BACKSHEET ONLY)
9	H136751	DECAL	1		
10	AH132905	PIN	1		R.H. (LATCH PIN ASSY)
	AH132906	PIN	1		L.H. (LATCH PIN ASSY)
11	24H1327	WASHER	4		15/32" X 1-1/8" X 7/64"
12	24H1111	WASHER	2		17/32" X 1-1/16" X 0.090"
13	03H1659	BOLT	2		1/2" X 1"
	12H301	LOCK WASHER	2		1/2"
	14H1040	NUT	2		1/2"
14	H113371	FLOOR	1		(ARC WELDED)
15	AH96757	SHIELD	1		R.H. (8820)
16	03H1268	BOLT	8		5/16" X 3/4"
	12H303	LOCK WASHER	8		5/16"
	14H785	NUT	8		5/16"
17	AH96758	SHIELD	1		L.H. (8820)
18	H87337	PIN	5		ADJUSTING
19	24H1111	WASHER	14		17/32" X 1-1/16" X 0.090"
20	19H2062	CAP SCREW	7		1/2" X 4"
	14H1040	NUT	7		1/2"
21	03H1540	BOLT	4		5/16" X 3/4"
	N10213	LOCK NUT	4		

A19

FRAME, STRIPPERS, DIVIDERS, AND PLATES

H29885F -UN-01JAN94

DIVIDER POINTS



H29885F

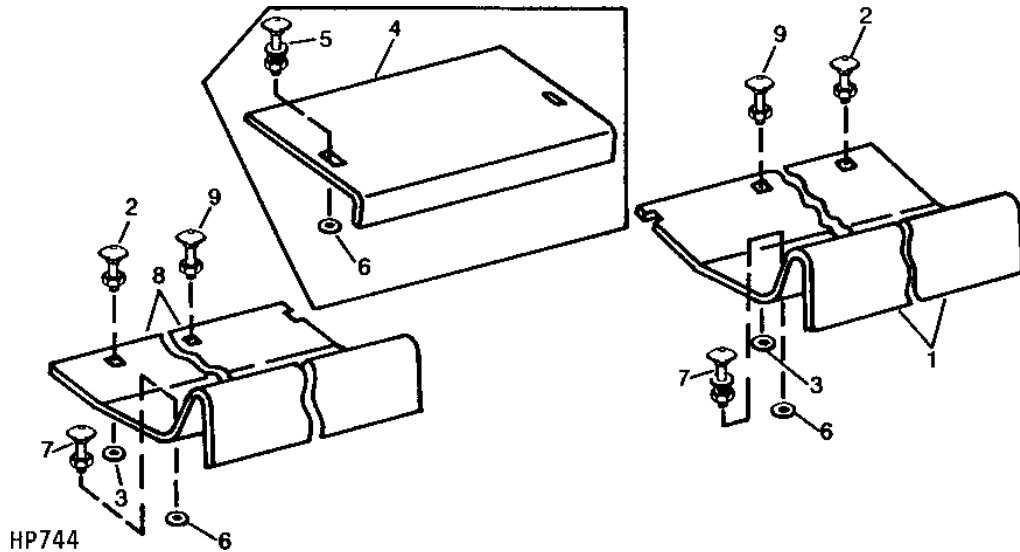
KEY	PART NO.	PART NAME	QTY	SERIAL NO.	REMARKS
1	24H1111	WASHER	2	17/32" X 1-1/16" X 0.090"	
2	24H1305	WASHER	8	13/32" X 13/16" X 0.065"	
3	H96365	SHOE	1	(L.H.)	
4	24H1305	WASHER	2	13/32" X 13/16" X 0.065"	
5	10H1026	BOLT	2	3/8" X 1"	
	12H304	LOCK WASHER	2	3/8"	
	14H812	NUT	2	3/8"	
6	03H1500	BOLT	8	3/8" X 1"	
	12H304	LOCK WASHER	8	3/8"	
	14H812	NUT	8	3/8"	
7	03H1659	BOLT	5	1/2" X 1"	
	12H301	LOCK WASHER	5	1/2"	
	14H1040	NUT	5	1/2"	
8	03H1731	BOLT	2	1/2" X 1-1/2"	
	12H301	LOCK WASHER	2	1/2"	
	14H1040	NUT	2	1/2"	
9	H96364	SHOE	1	(R.H.)	
10	24H1136	WASHER	4	11/32" X 11/16" X 0.065"	
11	16H1357	RIVET	2	3/8" X 1-1/2"	
12	19H1801	CAP SCREW	2	3/8" X 2"	
	H95174	LOCK NUT	2		
13	AH93794	POINT	2	LOOP DIVIDER	
14	19H1906	CAP SCREW	4	5/16" X 1-1/2"	
	12H303	LOCK WASHER	4	5/16"	
	14H785	NUT	4	5/16"	
15	AH92459	CROP DIVIDER	2		

A20

FRAME, STRIPPERS, DIVIDERS, AND PLATES

FEED PLATES

HP744 -UN-01JAN94



KEY	PART NO.	PART NAME	QTY	SERIAL NO.	REMARKS
1	H96281	PLATE	1	-483410	(L.H.)
	H109212	PLATE	1	483411-	(L.H.)
2	03H1659	BOLT	2		1/2" X 1"
	12H301	LOCK WASHER	2		1/2"
	14H1040	NUT	2		1/2"
3	24H1111	WASHER	2		17/32" X 1-1/16" X 0.090"
4	H96276	STRAP	1	-483410	
5	03H1765	BOLT	2	-483410	3/8" X 3/4"
	12H304	LOCK WASHER	2	-483410	3/8"
	14H812	NUT	2	-483410	3/8"
6	24H1305	WASHER	14	-483410	13/32" X 13/16" X 0.065"
	24H1305	WASHER	12	483411-	13/32" X 13/16" X 0.065"
7	03H1500	BOLT	12		3/8" X 1"
	12H304	LOCK WASHER	12		3/8"
	14H812	NUT	12		3/8"
8	H96280	PLATE	1	-483410	(R.H.)
	H109211	PLATE	1	483411-	(R.H.)
9	03H1540	BOLT	4		5/16" X 3/4"
	N10213	LOCK NUT	4		